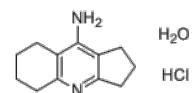


Product Name : Ipidacrine
Cat. No. : PC-62461
CAS No. : 118499-70-0
Molecular Formula : C₁₂H₁₆N₂
Molecular Weight : 188.27
Target : Acetylcholinesterase (AChE)
Solubility : 10 mM in DMSO



Biological Activity

Ipidacrine is a reversible acetylcholinesterase (**AChE**) inhibitor that directly stimulates impulse transmission in the central nervous system and neuromuscular synapses by blocking membrane potassium channels.

Ipidacrine enhances not only choline, but also adrenaline, serotonin, histamine, and oxytocin effects on smooth muscle.

References

Nabeshima T, et al. *Eur J Pharmacol.* 1988 Sep 23;154(3):263-9.

Onodera K, et al. *Nihon Shinkei Seishin Yakurigaku Zasshi.* 1998 Apr;18(2):33-7.

Kojima J, et al. *Gen Pharmacol.* 1998 Aug;31(2):297-300.

Caution: Product has not been fully validated for medical applications. Lab Use Only!

E-mail: tech@probechem.com